

PRODUCT SPEC SHEET

MAGITEX DECOR

Collection: Night Fever

Description: A classic upholstery with a weave design

Pattern: Bohemian

Width: 55 INCHES

Composition: 100% Polyester

Usage: Upholstery, Bedspreads, Pillows

Flammability: CAL 117 ; NFPA 260 ; UFAC-1 ; IMO(8)

Abrasion: 54,000 Double Rubs

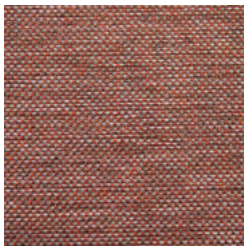
Repeat: H: 0.19"; V: 0.19"

Weight: 21 OZ/Linear Yard

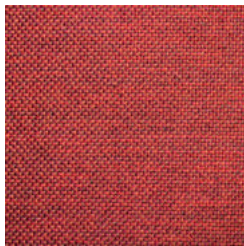
Soil Release: AATCC 130

Cleaning instructions: Dry Clean Only

COLORWAYS



Brick



Cabernet



Ivory



Latte



Linen



Taupe